

Powering Green Energy Together

Lemanaghan Wind Farm Draft Amenity Plan

Learn more at lemanaghanwindfarm.ie

Bord na Móna





Introduction

The proposed Lemanaghan Wind Farm will include the construction of new access roads to install and maintain the wind turbines. This Draft Amenity Plan utilises this new infrastructure as a basis for most of the proposed trails for walking and cycling. Additional amenity links are also provided to create loops and increase accessibility within the site.

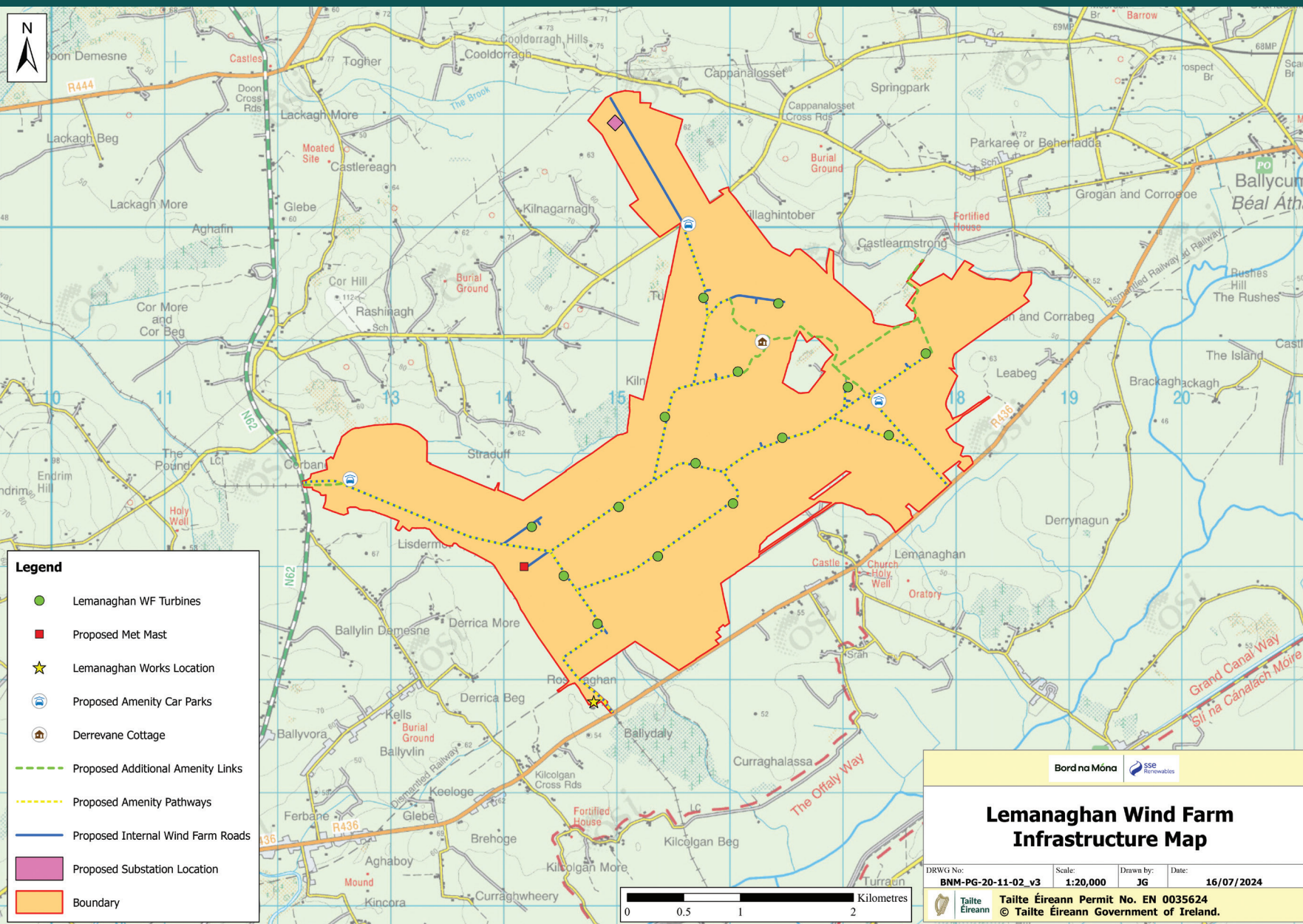
This Draft Amenity Plan has been produced in conjunction with community feedback received from the proposed Lemanaghan Wind Farm Consultation events held in April/May and September/October 2021. It provides an overview of amenity facilities for the proposed Wind Farm and will be submitted as part of the planning application for the proposed wind farm development to be considered by An Bord Pleanála.

The proposed development, including the Draft Amenity Plan, will not impact on areas of high ecological or archaeological heritage importance or on any other areas of environmental significance. The amenities will tie in with and complement the proposed wind farm infrastructure and any future cutaway bog rehabilitation works. The proposed amenity infrastructure will also link with, or provide opportunities for future connectivity with, settlements and sites of interest in the wider community.

Bord na Móna



Learn more at [lemnaghanwindfarm.ie](https://www.lemnaghanwindfarm.ie)



The key amenities identified in this **Draft Amenity Plan** include:

The proposed amenity infrastructure will also link with, or provide opportunities for future connectivity with, settlements and sites of interest in the wider community.

A network of internal roads provide looped routes for walking and cycling.

Trail infrastructure such as benches, waymarker posts and interpretation panels.

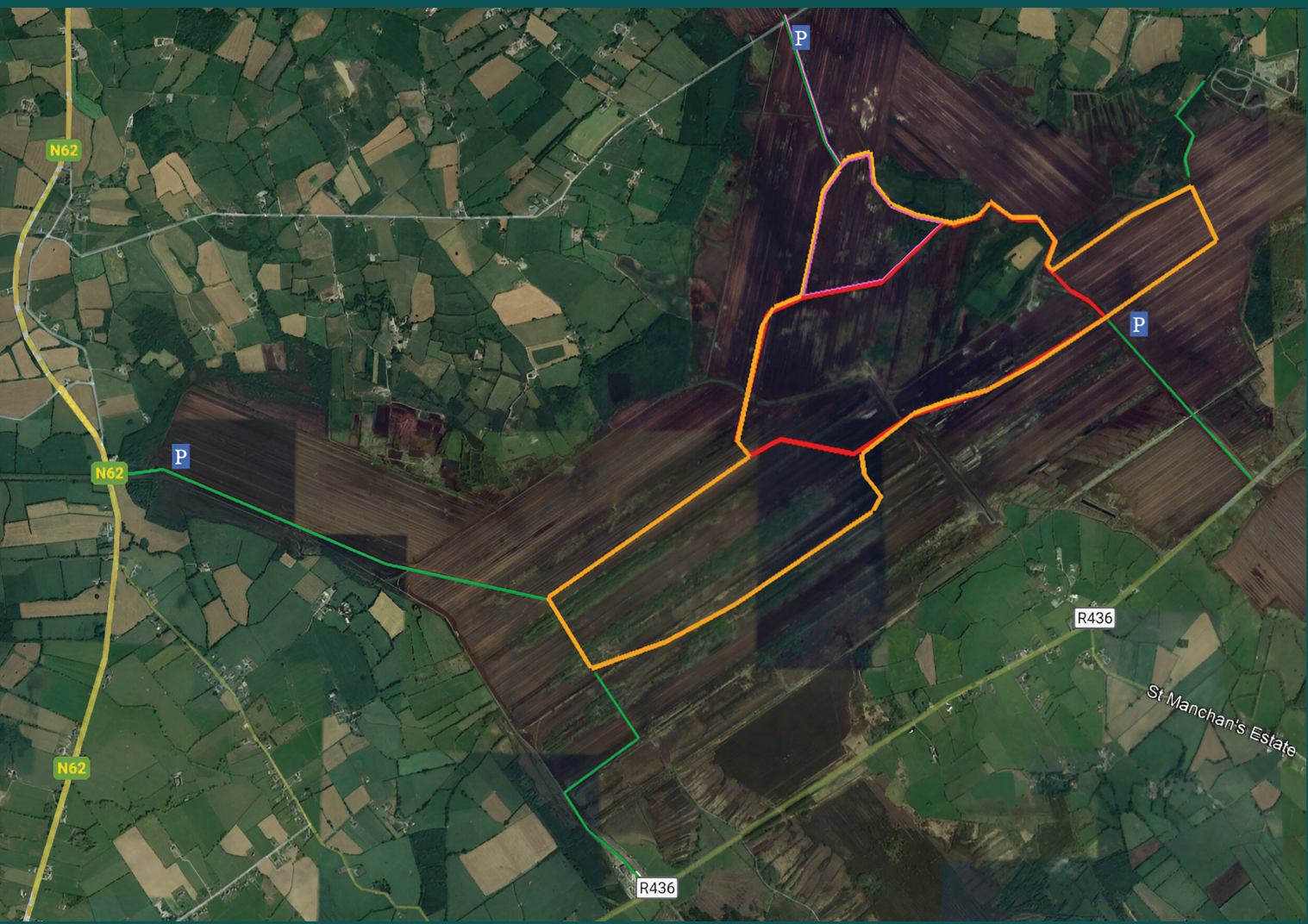
Key amenity access infrastructure such as car parks.

Access & Car Parks

There are three new car parks proposed to service access to the site by vehicle which are distributed geographically across the site.

These are intended to provide a range of options to access the site.





Proposed Trail Routes

The Draft Amenity Plan includes a number of waymarked trails of different lengths, ranging from 3 to 10km, which will accommodate walkers and cyclists.

The routes have been designed to be looped and tie in with the network of existing roads, former railway lines and proposed internal wind turbine roads. In total, over 18km of amenity will be provided including 4.6km of additional amenity links.



- 3km loop
- 5km loop
- 10km loop

Sharing Our Story

Interpretation Panels

Interpretation and orientation signage will be strategically located throughout the site to guide, inform and maximise enjoyment of the site for all users.

The style of all signage will be consistent throughout. Materials such as corten steel will be used to provide a durable finish that will visually blend in with the natural landscape and create a visual link to other site furnishings including proposed benches.

Interactive signs that play recordings such as bird calls or historic recordings to be included with the potential for these signs to be powered by a renewable energy source and crankshaft systems.



Archaeological Heritage

Lemanaghan Bog and the surrounding areas have a rich archaeological history which will be taken into account during all stages of the project. It is planned to incorporate this archaeological history into the amenity proposals for the site.



Lectern signs with information about archaeological finds (bog body, axe, pilgrim path etc) and peripheral sites.



Site map showing the loops and access points.

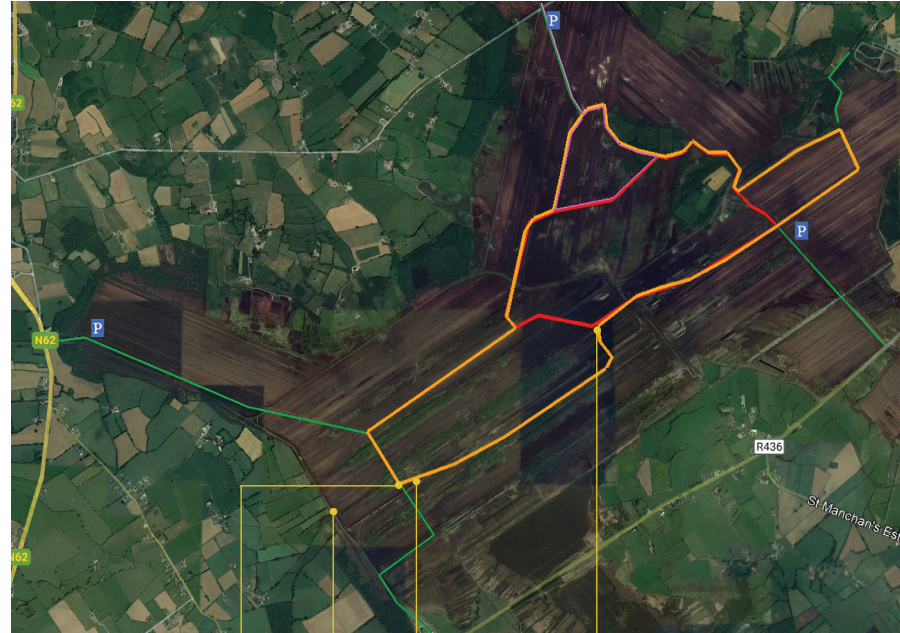


Place marker introducing the archaeological importance of the site.



Industrial Heritage

Lemanaghan Bog has a strong industrial history, and it is planned to incorporate this history into the amenity proposals for the site.



Lectern sign with information on industrial heritage (then and now).



Narrow-gauge BNM rail system.



The bog & social history – lectern sign and solar audio player (local stories).

Sharing Our Story

Interpretation Panels

The images used are examples from our other wind farm developments, and we will continue to work with the local community to develop the final interpretation plan.

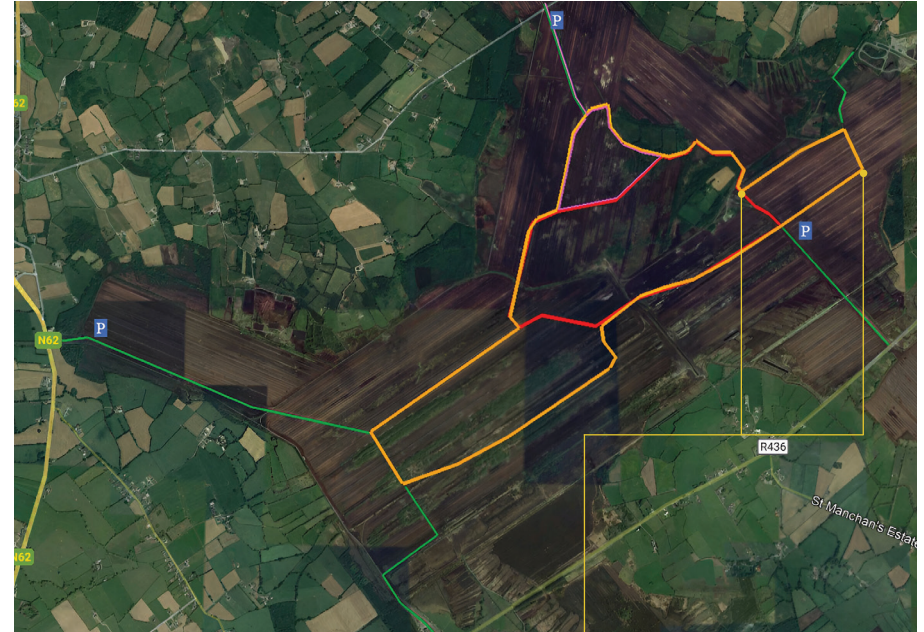
Sharing Our Story

Interpretation Panels



Biodiversity

The interpretation panels will provide information on the local flora and fauna.



Lectern signs with information on biodiversity.



Benches and Picnic Tables

Simple rustic style benches with armrests are proposed throughout the site. Every effort will be made to use recycled/reusable materials where possible. Typical examples of such materials would be reclaimed timber or recycled plastic.

Picnic table sets of a similar design will be installed at various locations to provide users with opportunities to rest and enjoy lunch on their visit. They will be designed to be wheelchair accessible.



Waymarker Posts

Waymarker posts will be used at key junctions throughout the site to guide users along designated trails. This may include:

- Tall finger posts with labelled markers at main path intersections to highlight routes to special features such as car parks.
- Smaller waymarker bollards at path junctions with colour coded directional discs to direct people along designated trails.

Benefits of the Development

Benefits arising from the construction and operation of the proposed Lemanaghan Wind Farm project will include:

- A Community Benefit Fund.
- 100 to 120 jobs at peak construction, followed by number of long term, high quality technical jobs in operations and maintenance.
- Substantial commercial rates paid to Offaly County Council, and investment in the wider economy through tax and exchequer contributions.
- Upgrades to the road infrastructure in the vicinity of the wind farm (as required).
- Indirect employment created through the sub-supply of a wide range of products and services.

Community Benefit Fund

It is envisaged that an annual Community Benefit Fund will be set up for the proposed Lemanaghan Wind Farm once the project is operational. As the project is at an early stage of its development, the exact nature and structure of a proposed Community Benefit Fund is not known at this time, albeit we would envisage it being similar in type to our existing Community Benefit Funds which include:

- A Community Benefit Scheme – providing funding to local communities and not-for-profit organisations.
- Educational Scholarship Support Scheme- providing an annual number of scholarship support to the wider community for a variety of courses of NFC Level 6 Certificate and above.
- A Near Neighbour Fund – providing an annual electricity contribution and once off support to carry out energy efficiency measures and/or education support to residents within a prescribed distance of a turbine.



Clonbullogue National School - basketball court.



Killannin GAA for All – funding kits.



Bracknagh Heritage Society - community mural.



Ballyfore GAA - completed fence.



Bunroe – funding for EV charger.

How you can get in touch

The proposed Lemanaghan Wind Farm will benefit from participation by all interested parties during each stage of the development.



Call us

If you wish to make a comment or require further information about the proposed wind farm please contact the project's Community Liaison Officer, Colm on 087 4143305.

Email us

Email us any comments or queries via:
lemanaghanwindfarm@bnm.ie

Write to us

Lemanaghan Wind Farm Communications Team,
Bord na Móna, Main Street, Newbridge, Co. Kildare.

Join our mailing list

Keep informed of all project updates by signing up to our project mailing list. Please visit the project website to complete the sign-up form:
www.lemanaghanwindfarm.ie

Learn more at lemanaghanwindfarm.ie

Bord na Móna



Bord na Móna



Learn more at lemanaghanwindfarm.ie